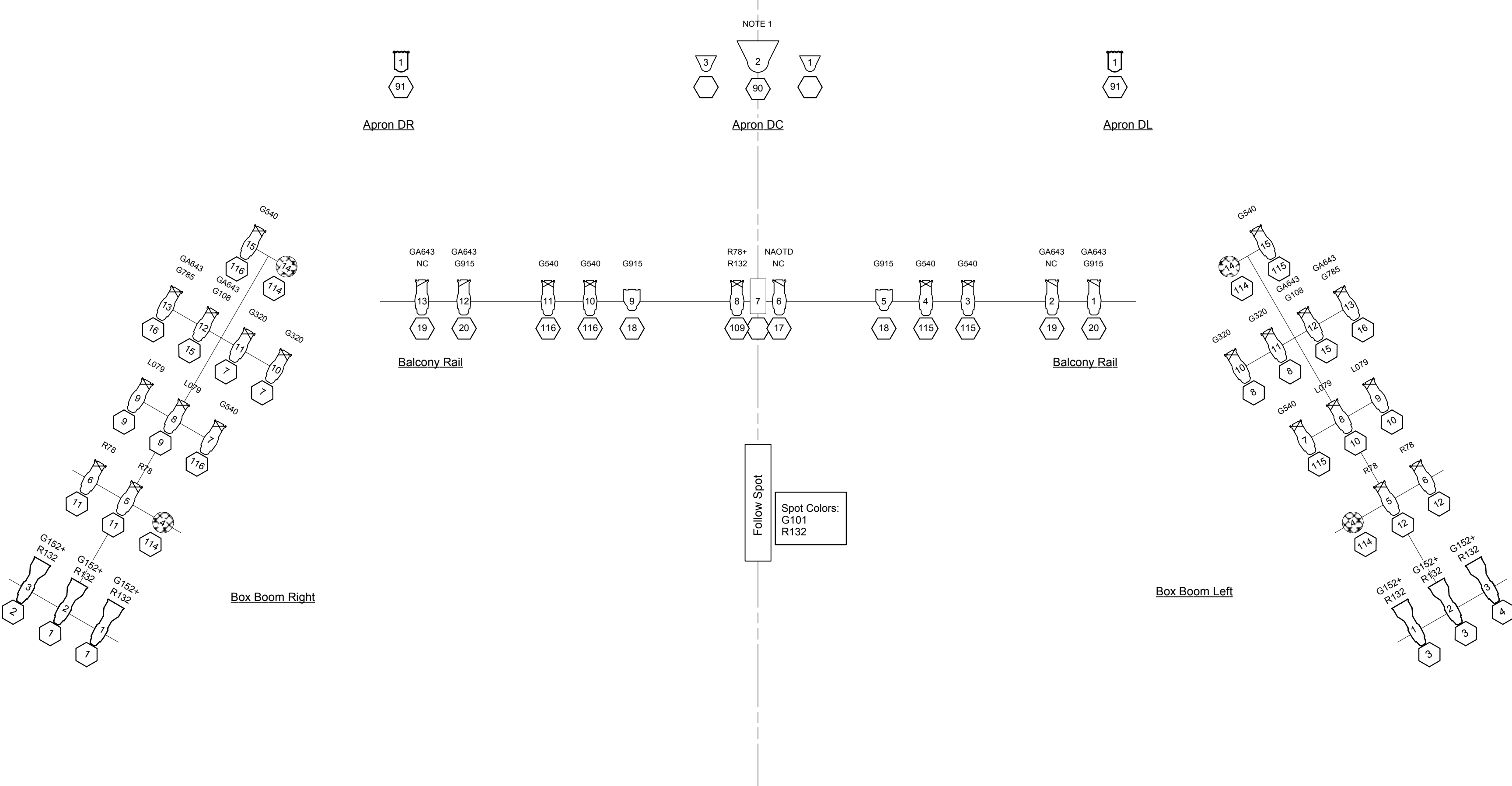
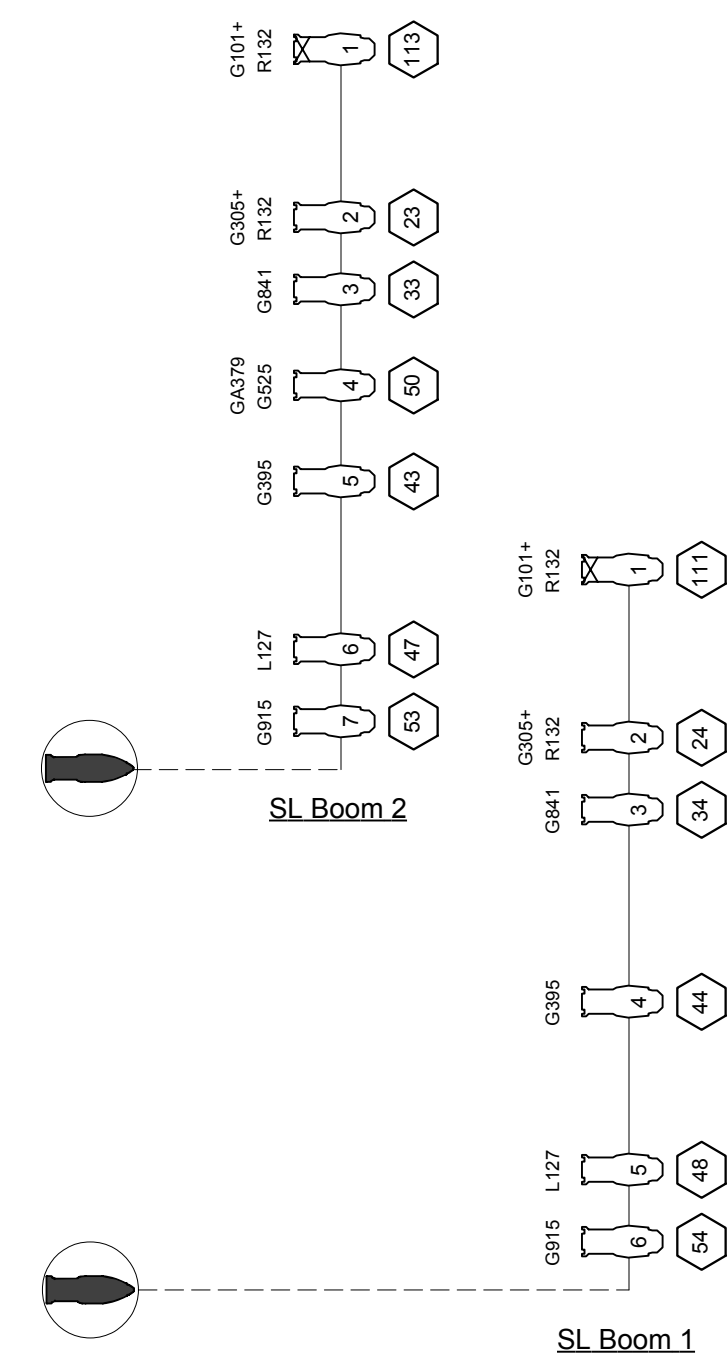
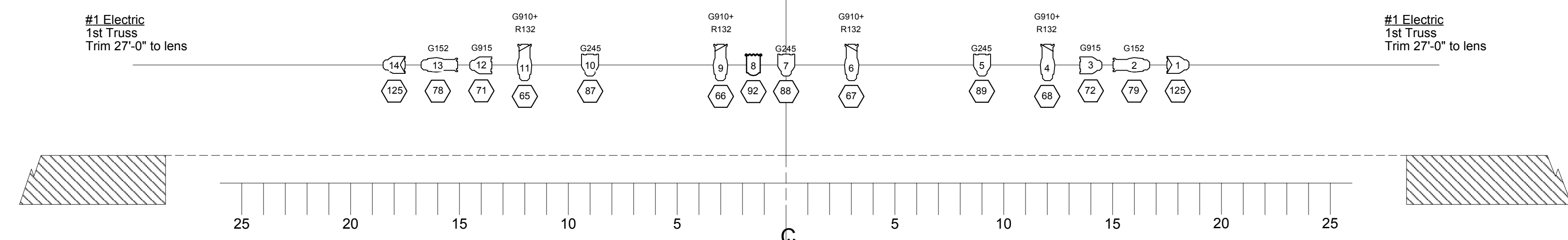
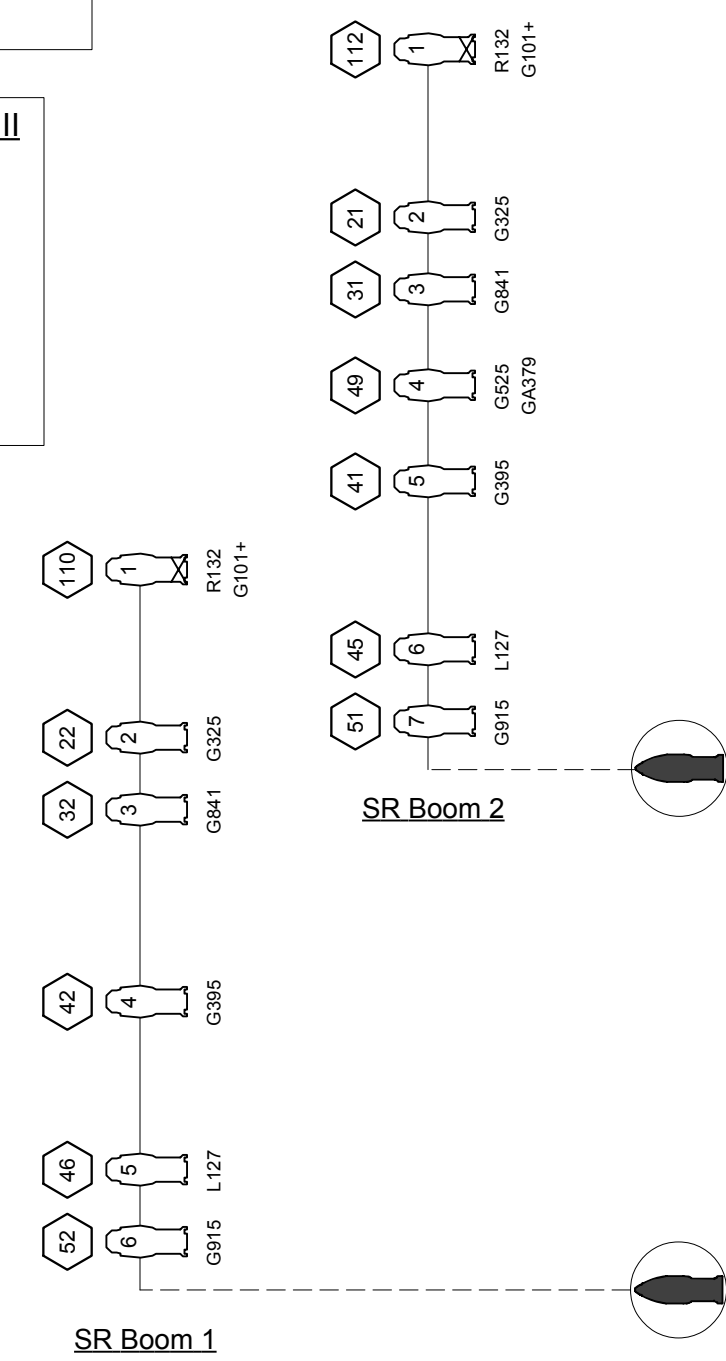
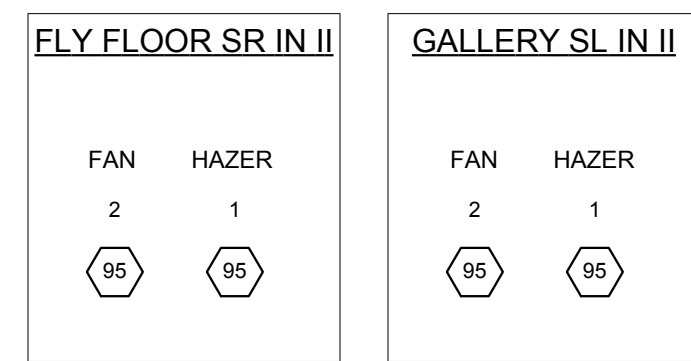
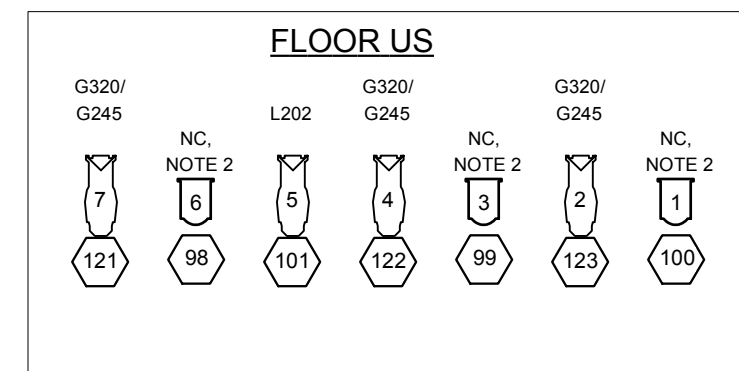
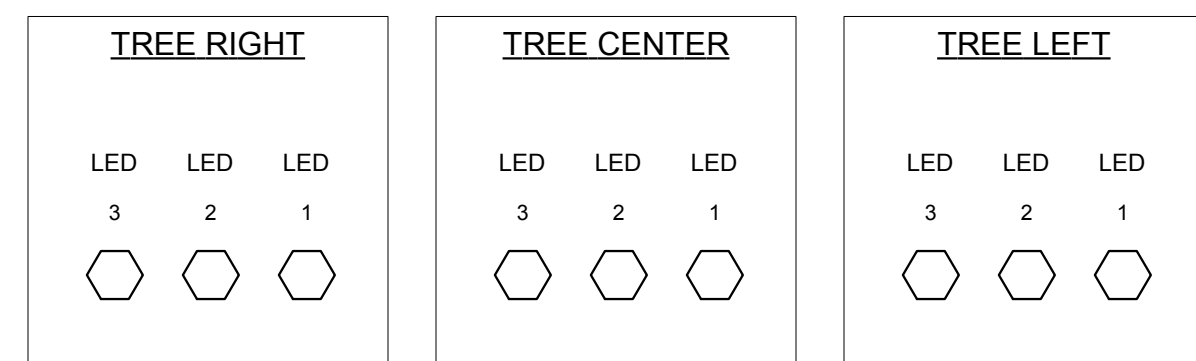


These Drawings And All Related Material Are The Property Of Tony Tucci. The Materials, Concepts, and The Resultant Design May Not Be Reproduced Without The Prior Consent Of Tony Tucci.

All Work Indicated By This Drawing And Related Paperwork Must Be Done In Compliance With All Applicable Federal, State And Local Fire, Safety and Electrical Codes. The Lighting Designer And His Staff Are Responsible For The Visual Design Of The Lighting And Are Not Responsible For Structural Or Electrical Accidents Resulting In Injury Or Damage.



KEY

- Diversitronics 3000 Strobe
- Photogenic 1250 Strobe
- ETC S4 - 10' - 575w
- ETC S4 - 19' - 575w
- ETC S4 - 26' - 575w
- ETC S4 - 36' - 575w
- ETC S4 - 50' - 575w
- ETC S4-Par-MFL - 575kw
- ETC S4-Par-WFL - 575kw
- 8" Fresnel - 1kw
- Wild Fire UV unit - 400w
- Follow Spot
- Strong ST II - 2kw

TYPICAL

Color / Template
Color
Unit #
Channel #

Note: Color/Template and Color ALWAYS remain above the unit and Channel # ALWAYS remains below the unit, no matter unit orientation. Except on the Booms.

Notes

- This Plot Is NOT To Scale Upstage and Downstage to the Plaster Line.
- Always Refer To Instrument Schedule And Hookup For Detailed Hanging, Color And Patching Information.
- Spacing Is From C-clamp to C-clamp Or C-Clamp to Center Line.
- NC = No Color
- L = Lee Filters
- R = Roscolux Filters
- T:XXX = Templates

BALLET AUSTIN PRESENTS
NOT AFRAID OF THE DARK

PARAMOUNT THEATER
 AUSTIN, TX
LIGHTING DESIGN: TONY TUCCI

Date: August 28, 2002 Scale: 1/4"=1'-0" Plate 1 of 1
 M.E. Ryan Brummel Drawn By: Kevin J. Greene
 kevingreene@earthlink.net - 512.731.4774